

8th grade Week 20
Air Pressure System

C-notes

Air Pressure

High/Low Pressure Systems

Large area where there is a dominant form of pressure.

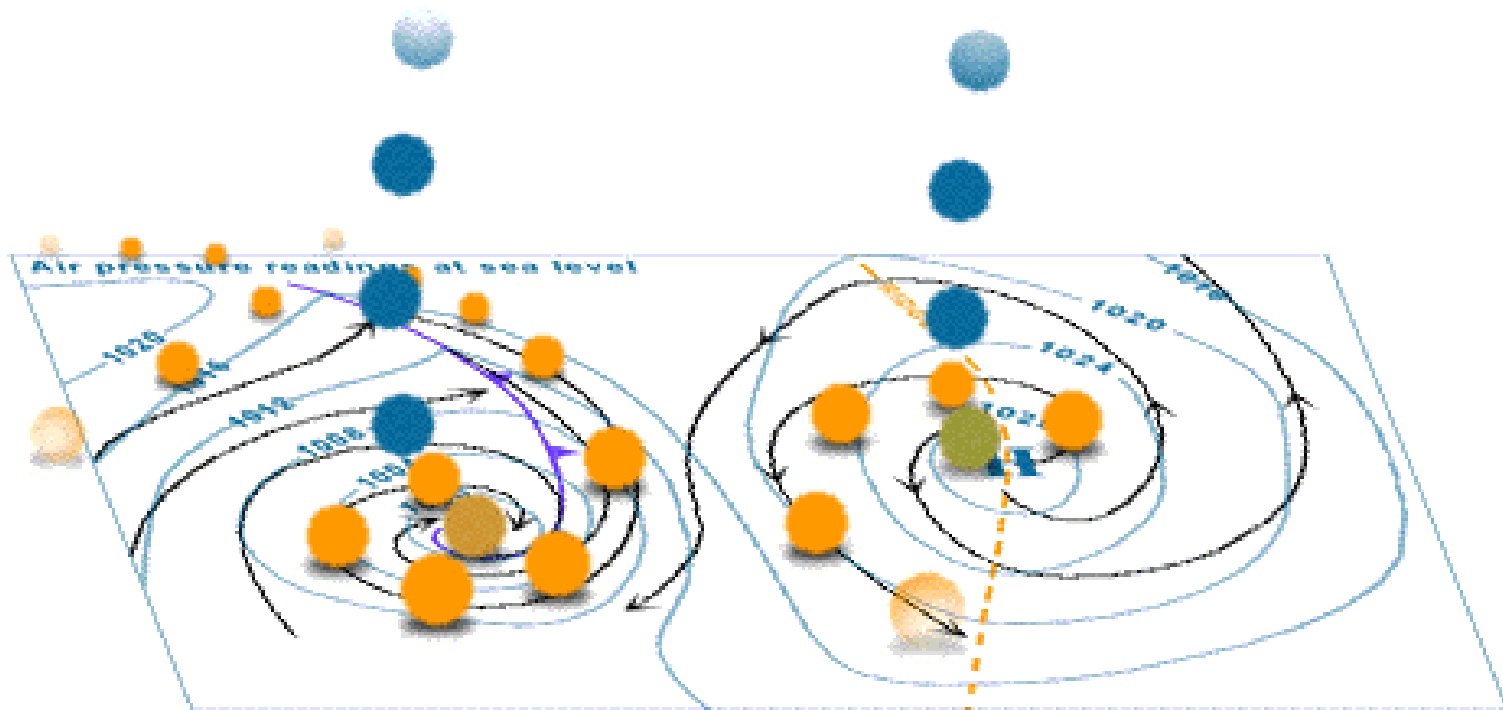
There are two types:

**High Pressure System-
Associated with clearing,
sunny weather**

**Low Pressure System-
Associated with
clouding, bad/severe
weather**

Low Pressure

High Pressure



C-notes

Air Pressure

High pressure

Air sinks

Air moves

COUNTERCLOCK

WISE around center

Low Pressure

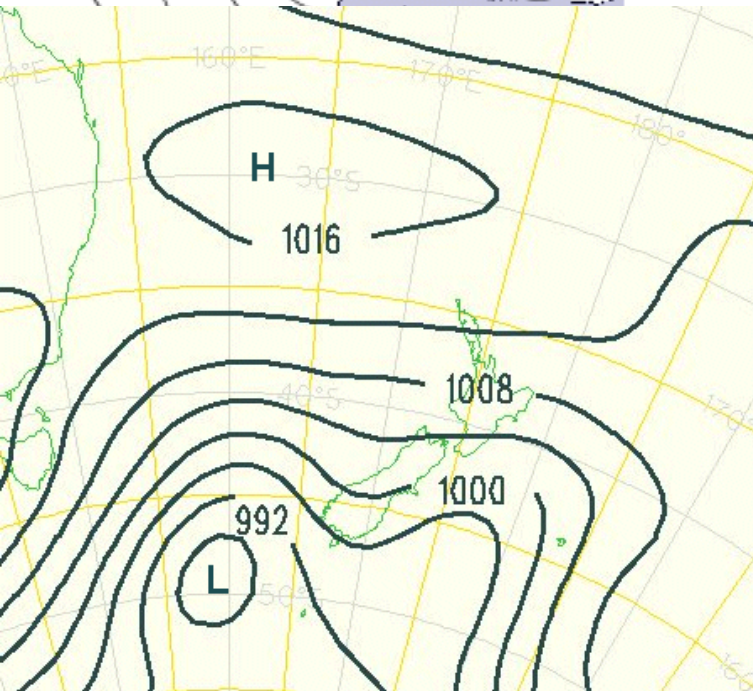
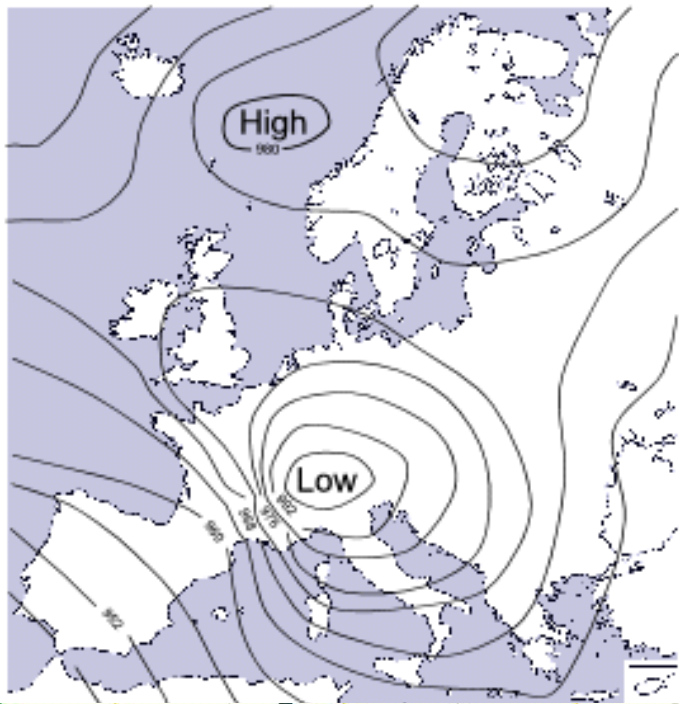
Air rises

Air moves

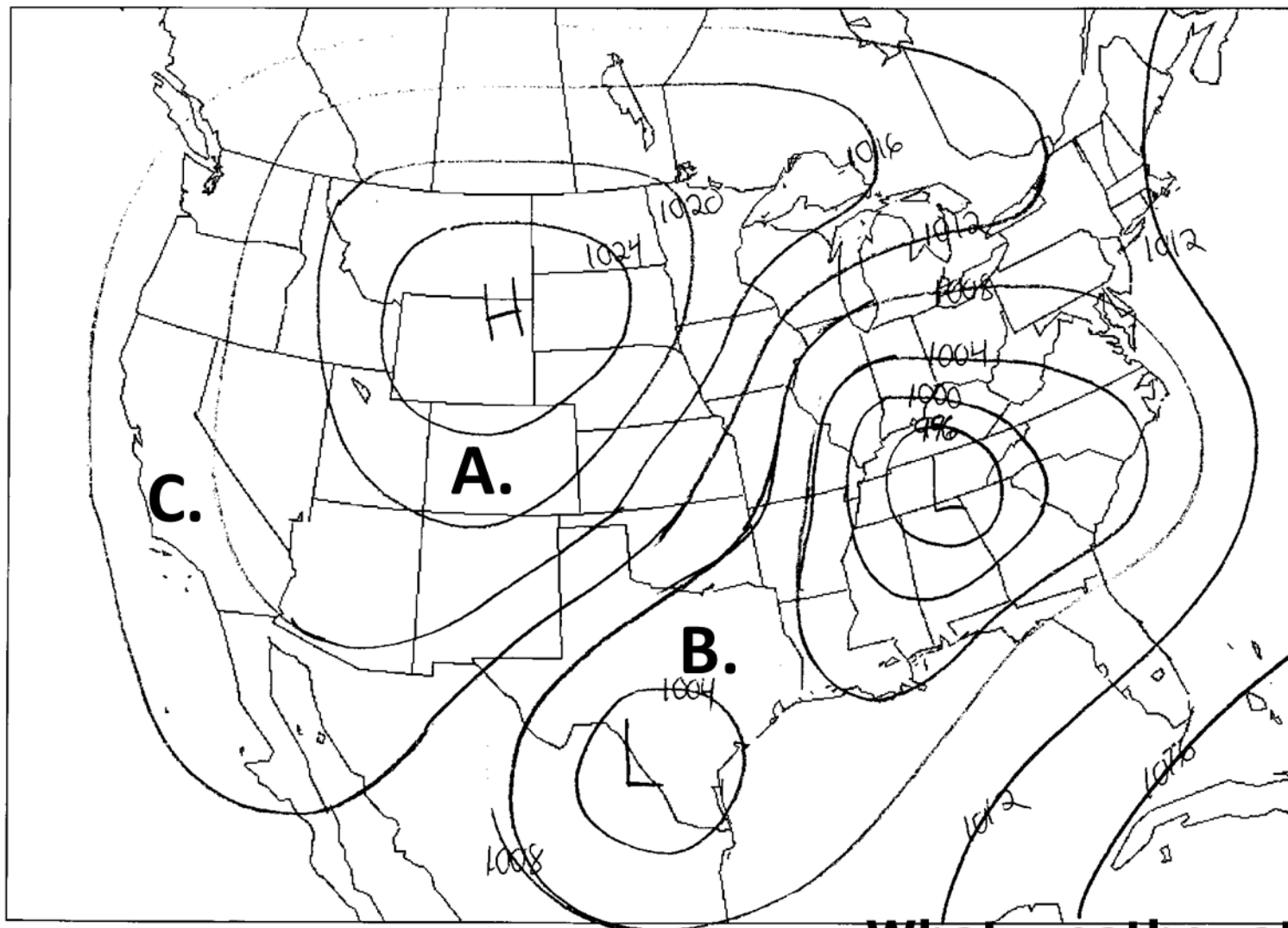
CLOCKWISE

around center

Reading Air pressure Maps



- Look for High and Low pressure systems.
- The area around a High is usually clear.
- The area around a Low usually has clouds or precipitation.
- Isobars- areas that have equal air pressure.
- Isobars that are close together indicate that there are strong winds.
- Isobars that are spaced far apart indicated soft winds.



<http://www.ametsoc.org/dstreme/extras/bmap.gif>

What weather at:

- A**
- B**
- C**